

# Plant Communities and Animals of the Porterfield Creek Open Space Preserve



The **Porterfield Creek Open Space Preserve** is a 250-acre preserve owned by the City of Cloverdale. The Preserve is located at the western edge of Cloverdale, where residential development meets ranchlands and undeveloped, forested lands. With diverse terrain, perennial water flow in the creeks, and serpentine geology, the Preserve supports a diversity of plants and wildlife. Several special-status plant and animal species, protected under federal and State law, occur here.

The following guide provides a brief overview of the key **plant communities and animals** of the Preserve.

## Please remember to:

- Stay on established trails
- Stay out of the creek – this habitat supports several fish and amphibian species that are threatened
- Do not approach or pick up wildlife
- Be aware of poison oak, ticks, rattlesnakes, and mountain lions
- Leave no trace
- Keep dogs on leash and out of the sensitive habitats, especially the creeks

## Douglas-fir Forest

- Most common forest type on the Preserve
- Douglas-fir trees dominate, intergrades with oak woodland

## Oak Woodland

- Found in central and eastern part of the Preserve
- Continuous canopy of oak trees with native soaproot and poison oak in understory

## Mixed Oak Forest

- Most common forest type on the eastern part of the Preserve
- Mosaic of coast live oak, Oregon oak, black oak, madrone, and bay. Native shrubs, vines, and herbs in the understory – honeysuckle, sticky monkeyflower, ferns, iris, and native grasses

## Native and Non-native Grassland

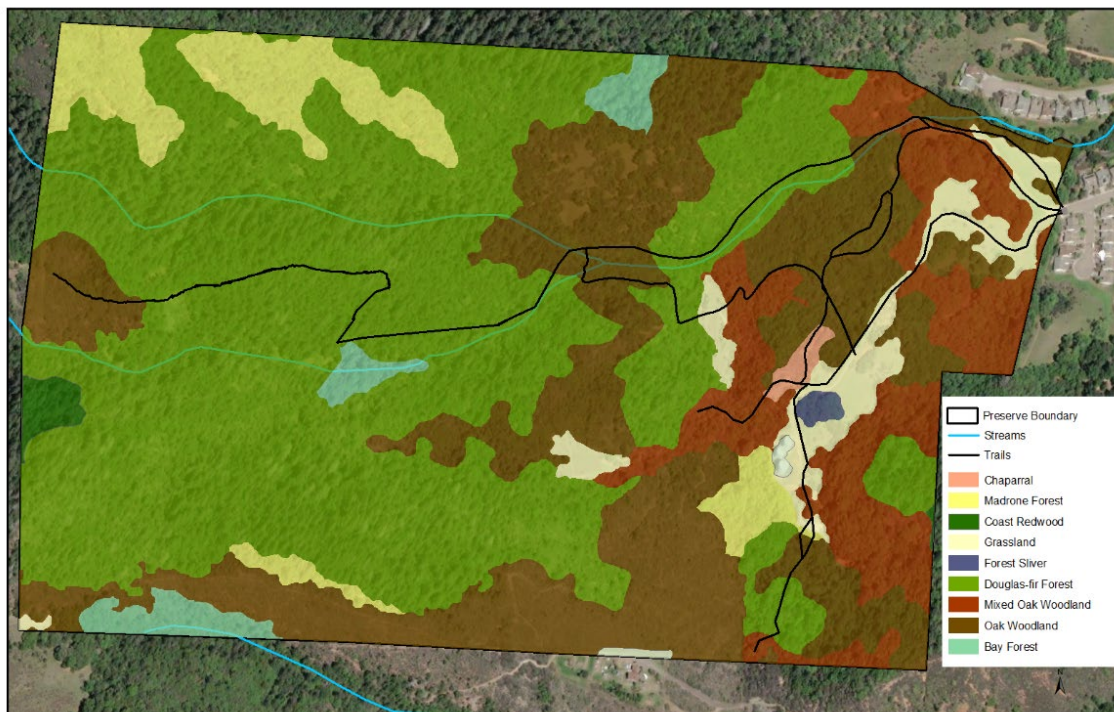
- Small stands within the Preserve
- A mixture of native purple needlegrass and California oatgrass and non-native annual grasses and forbs

## Riparian Forest

- Narrow band along Porterfield Creek
- Canopy of oaks, bay, big-leaf maple, and Oregon ash. Understory of spicebush, toyon, poison oak, blackberry, and ferns

## Chaparral

- Upper elevations where serpentine soils are present – a unique plant community with high diversity of native plants
- Dominated by shrubs including leather oak, chamise, toyon, and ceanothus



# Plant Communities and Animals of the Porterfield Creek Open Space Preserve

## Mammals

- Black-tailed Deer\*
- Bobcat\*
- Botta's Pocket Gopher
- Broad-footed Mole
- Coyote
- Gray Fox
- Striped Skunk
- Western Gray Squirrel



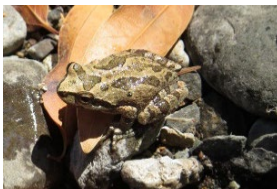
## Reptiles

- Alligator Lizard
- California Striped Racer
- Gartersnake\*
- Gophersnake
- Rattlesnake
- Sharp-tailed Snake
- Western Fence Lizard\*
- Skilton's Skink



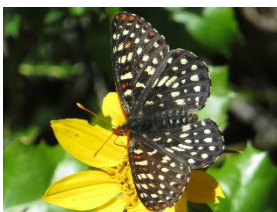
## Amphibians

- Arboreal Salamander
- California Giant Salamander
- Ensatina\*
- Foothill Yellow-legged Frog
- Sierran Treefrog\*
- Slender Salamander



## Butterflies

- California Sister\*
- California Tortoiseshell
- Variable Checkerspot\*
- Mourning Cloak
- Painted Lady
- Pale Swallowtail



## Other Invertebrates

- Banana Slug\*
- Western Forest Scorpion
- False Tarantula\*



## Birds

- Acorn Woodpecker\*
- American Robin
- Anna's Hummingbird
- Ash-throated Flycatcher
- Band-tailed Pigeon
- Bewick's Wren
- Black Phoebe
- Brown Creeper
- California Quail\*
- California Towhee
- Cassin's Vireo
- Chestnut-backed Chickadee
- Common Bushtit
- Dark-eyed Junco
- Downy Woodpecker
- Northern Flicker
- Northern Mockingbird
- Oak Titmouse
- Orange-crowned Warbler
- Pacific-slope Flycatcher
- Pileated Woodpecker\*
- Red-shouldered Hawk
- Red-tailed Hawk
- Spotted Towhee
- Steller's Jay
- Tree Swallow
- Turkey Vulture
- Western Scrub-Jay\*
- Western Tanager



## Fish

- Steelhead\*



Please remember several fish and wildlife species residing within the Preserve are protected by federal and State laws and should not be disturbed. The creek animals are especially sensitive to human disturbance. Photos courtesy of local biologist/PCI. Wildlife listed based on species documented on the Preserve and/or reported in iNaturalist. \* indicates photo included.